

**AMTCPDC**  
Established 1956



# Who We Are??

With over 40 years of experience with multinational O.E.M.s **AMTCPDC** is acknowledged as one of the best manufacturers of Non-Ferrous Pressure Die Casting components. Complete solution to Pressure Die Casting technology is available to our customer ranging from Tool Designing, Casting, Machining, Surface Finishing and Sub-Assembling. Our vast experience coupled with technology up-gradation and continuous improvement enables us to successfully supply Pressure Die Casting components to a wide array of industries; be it automotive, energy related, house-hold or any other.



# SURFACE FINISH

## SURFACE FINISH

A different variety of surface finishes are available to our customer. Using the very best of material and modern process an appealing and durable finish is ensured.

**AMTCPDC** houses a newly setup for Electrostatic Powder Coating, where castings are pre-treated with chromate to ensure better adhesion of the powder coating to the surface.

As well as Powder Coating **AMTCPDC** do offer Buffed finish and Wire Brushed finish which can then be coated with Clear Lacquer to protect the surface finish and to further enhance the appeal of the product.



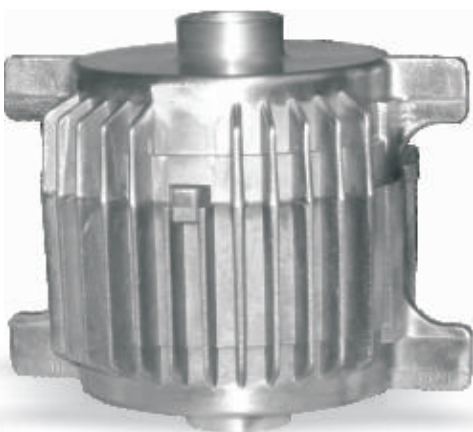
Clutch Cover for 100cc Motor Cycle



Natural Gas Meter Housing  
(Low Consumption)

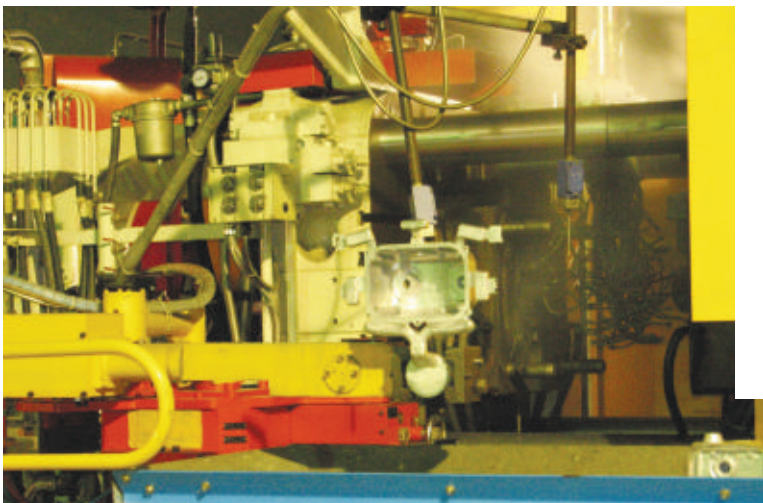
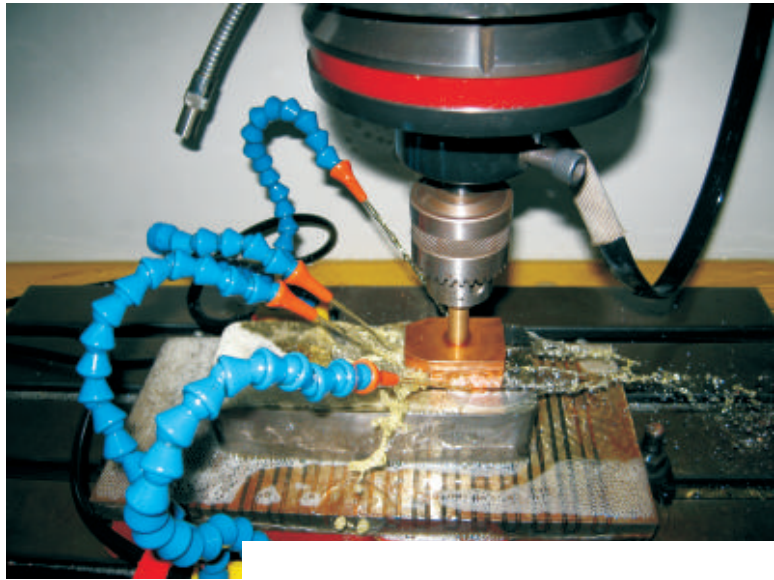


Natural Gas Meter Housing  
(High Consumption)



Motor Housing





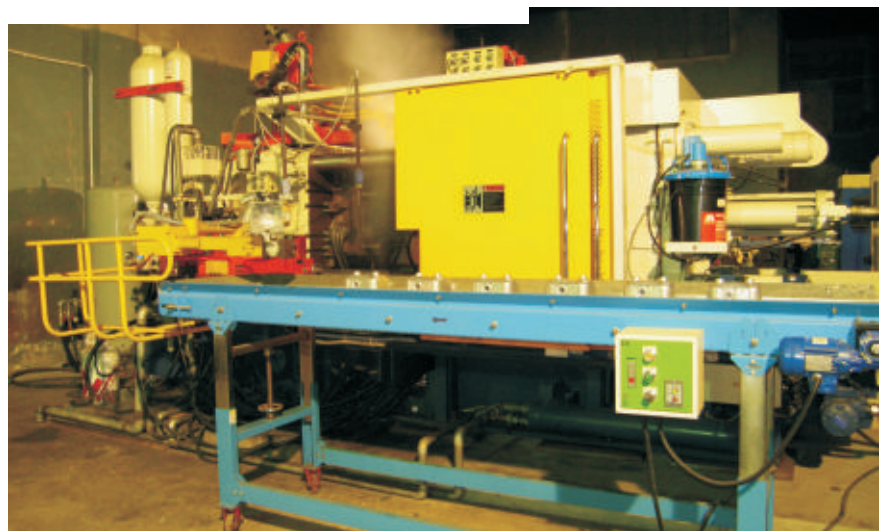
In choice of material and tool design **AMTCPDC** works closely with its customers to maximize Quality with Reasonable pricing and the ultimate intention to provide the best to the Customer.

# Die Casting Machine Capacity



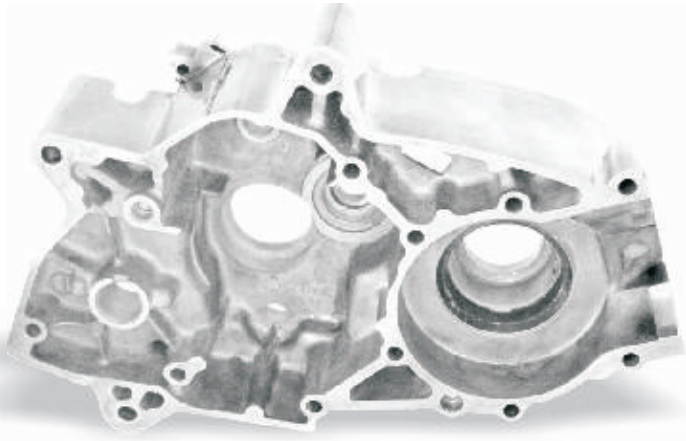
**AMTCPDC** houses 10 cold chamber High Pressure Die Casting Machines with locking force varying from 150 tons to 800 tons. This range enables us to manufacture castings weighting from few grams to 8.5 Kg.

**AMTCPDC** has standardized the use of Auto Laddler, Auto Sprayer and Auto Extractor on its new Die casting Machines to satisfy huge volume orders and to ensure better repeatability in castings.

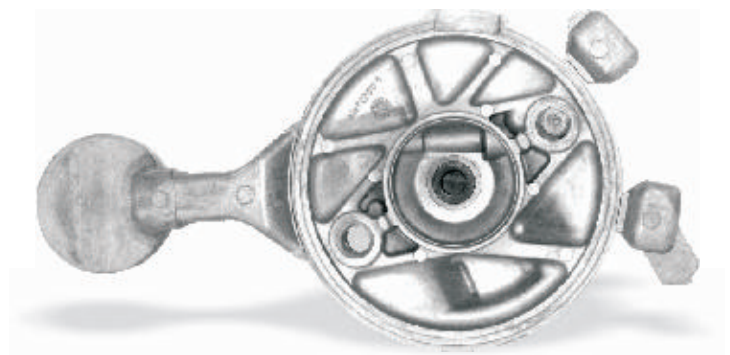




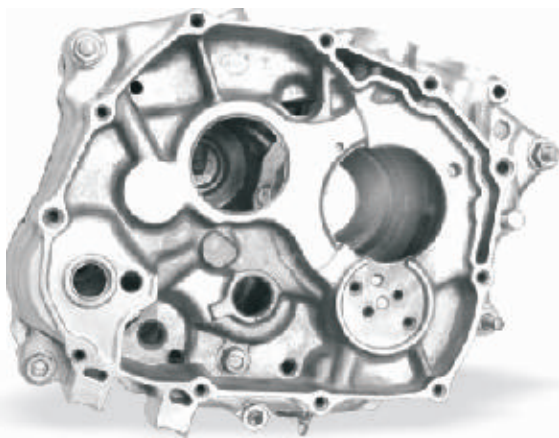
Rear Wheel Hub for  
125cc Motor Cycle



Crank Case for 100cc Motor Cycle



Front Wheel Brake Panel



Crank Case for  
125cc Motor Cycle

Brake Shoe Body



# SUB ASSEMBLIES

## SUB ASSEMBLIES

**AMTCPDC** also offers its customer sub-assembly or full-assembly service. As per customer needs many of the other components can be outsourced and assembled in-house to be dispatched to our customer in ready to fit/use form. This helps our customer in reducing cost and time which in turns increase their production.



Front Wheel Hub Set



Rear Wheel Hub Set





### **Head Office & Plant No. 1**

Ali Machine Tool Company  
Plot No. B-20 Sindh Industrial and Trading Estate (S.I.T.E),  
Super Highway, Near Gulshan-e-Maymar Housing Society,  
Karachi, Pakistan.  
Tel: +92 21 36881101 , 36881103, Fax: +92 21 36881102

### **Plant No. 2**

Ali Machine Tool Company  
46-KM Multan Road, Adda Nathey Khalsa, Chunian Industrial Estate,  
District Kasur, Pakistan.  
Tel: +92 49 4540600, 4540601, Fax: +92 49 4540123 4540124

[info@amtcdiecasting.com](mailto:info@amtcdiecasting.com)    [www.amtcpdc.net](http://www.amtcpdc.net)